

auslogics
software

Windows Slimmer Free Windows Slimmer Pro

User Manual





Welcome to Auslogics Windows Slimmer

This is your guide to one of the most effective
Windows size optimization tools in the world that lets you:



Clean out Windows demo
content



Remove unneeded “filler” to
reduce Windows size and help
it run more efficiently



Schedule regular
maintenance to keep your
Windows running at its best

Installing Windows Slimmer



Launch the installer by double – clicking on the downloaded file.

You can leave the installation options as they are or customize them on this page.




Click the links to review the EULA and Privacy Policy, then click the **'Agree and install'** button to start installation.

Installing Windows Slimmer

Auslogics Windows Slimmer

Installation complete

Thank you for installing Auslogics Windows Slimmer



Limited Time Chance

Grab a BitReplica license key (worth \$19.95) for FREE, yours to keep forever

Back up files you can't afford to lose, including documents, photos, videos or any other type of data with this simple and smart tool.

[Get Your FREE License Key Now](#)

Launch Windows Slimmer

[Finish](#)

Make sure the checkbox to launch Windows Slimmer is checked and click the 'Finish' button to complete installation.

Free vs Pro

auslogics
software

5

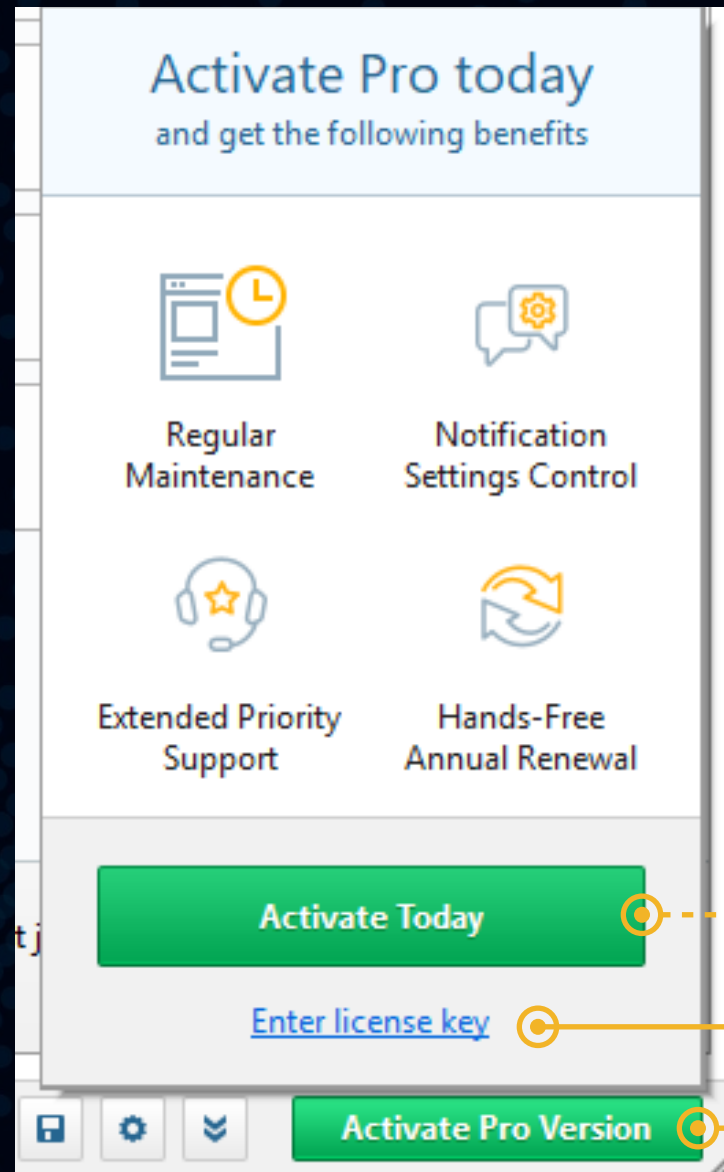
Windows Slimmer comes in two versions: Free and Pro. The Free version offers essential cleanup of unneeded Windows components and apps. The Pro version lets you run regular cleanups and size optimization, apply advanced tweaks, control notifications and more. This table should give you an idea of what you can expect from each version.

When using the Free version, you will see all Pro features marked with the yellow **PRO** tag. This should give you a good idea of what you can get if you upgrade. The rest of this manual will talk about both Free and Pro version features in more detail.

	FREE	PRO
⚙ Regular maintenance	✗	✓
⚙ Smart Compact OS feature to maximize space	✗	✓
⚙ Notification settings control	✗	✓
⚙ Extended Priority Support	✗	✓
⚙ Ask a Question option for live expert answers	1 question	3 questions



Activating Windows Slimmer Pro



To unlock and use all of the Pro features, you need to upgrade your Windows Slimmer Free to the Pro version. Here is how to do that:

① Hover your mouse over the **'Activate Pro Version'** button at the bottom-right of the program window (do not click). This will open a popup with two options for you to click. The **'Activate Today'** button takes you to a web page where you can purchase a license key. (You can also reach this page by simply clicking the **'Activate Pro Version'** button without bringing up the popup).

② Right below the **'Activate Today'** button in the popup. You'll see the **'Enter license key'** link – click it when you've already purchased a license and received a license key via email. This will bring up a small window with the field to enter your key in. Copy the license key from the confirmation email. Then, go back to Windows Slimmer, paste the key into the registration field and click **'Register'**. ③

! NOTE

When you place your order online and complete payment, a confirmation message is sent to you via email to the address you provide during checkout. You will be getting two messages: one containing your invoice and the other with your license information. If you don't see the message(s), please check your spam/junk mail folder before contacting technical support. A common reason for not receiving an order confirmation is typos made in the email address, so be sure to double-check your contact info when placing your order.

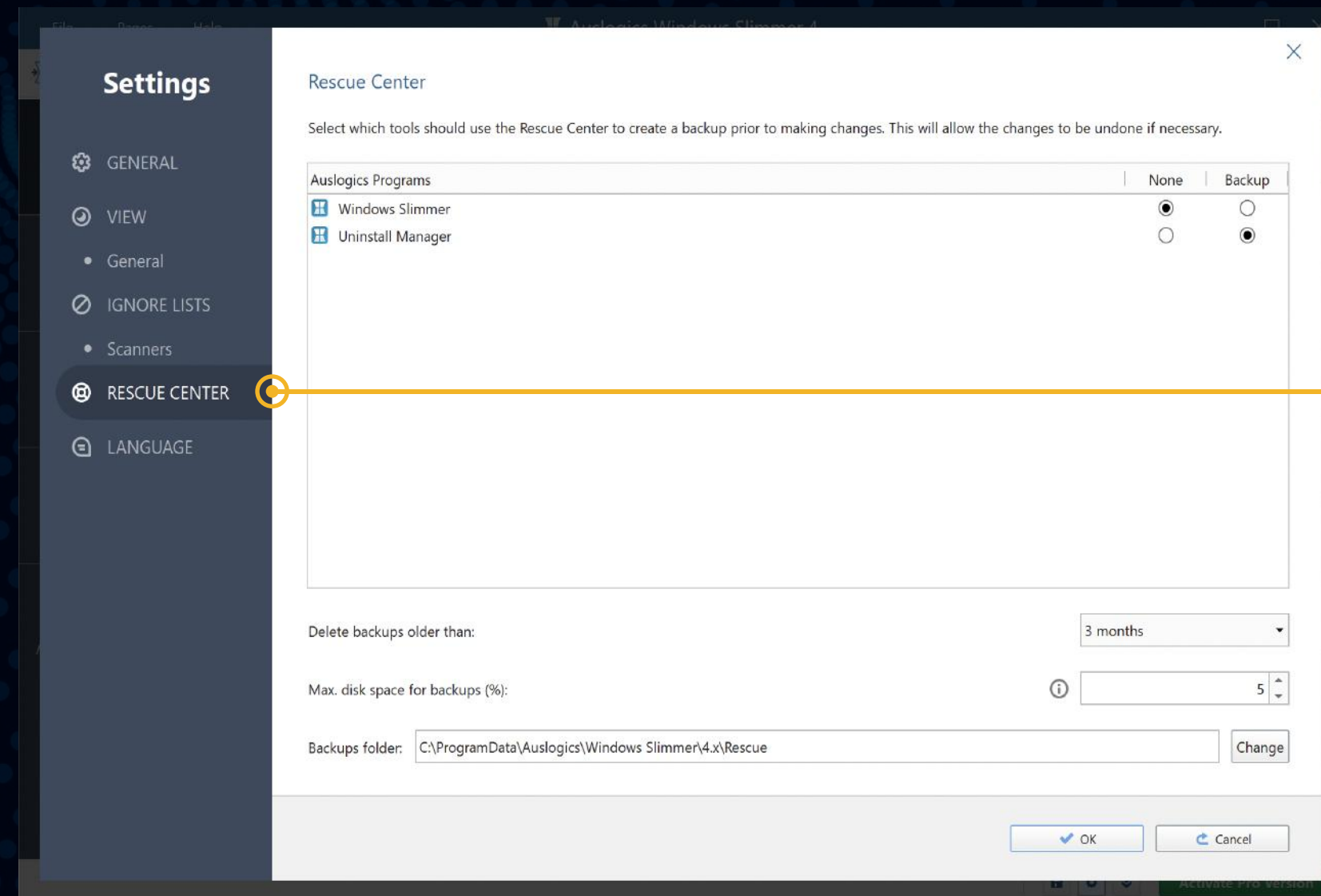


Backing Up with the Rescue Center

Auslogics Windows Slimmer is equipped with the Rescue Center, which lets you create a backup prior to running Windows cleanup and optimization.

This helps ensure that you can always roll back any changes made by Auslogics software if you do not like the results.

We recommend getting familiar with the Rescue Center prior to using Windows Slimmer for the first time. You can specify how long those backups should be stored and how much disk space they may occupy.



To access the Rescue Center settings, click on the gear icon at the bottom-right of the program window.

In the Settings window that opens, click on 'Rescue Center' on the left-side navigation panel.

This will open the current Rescue Center settings and let you change any of them according to your preferences.

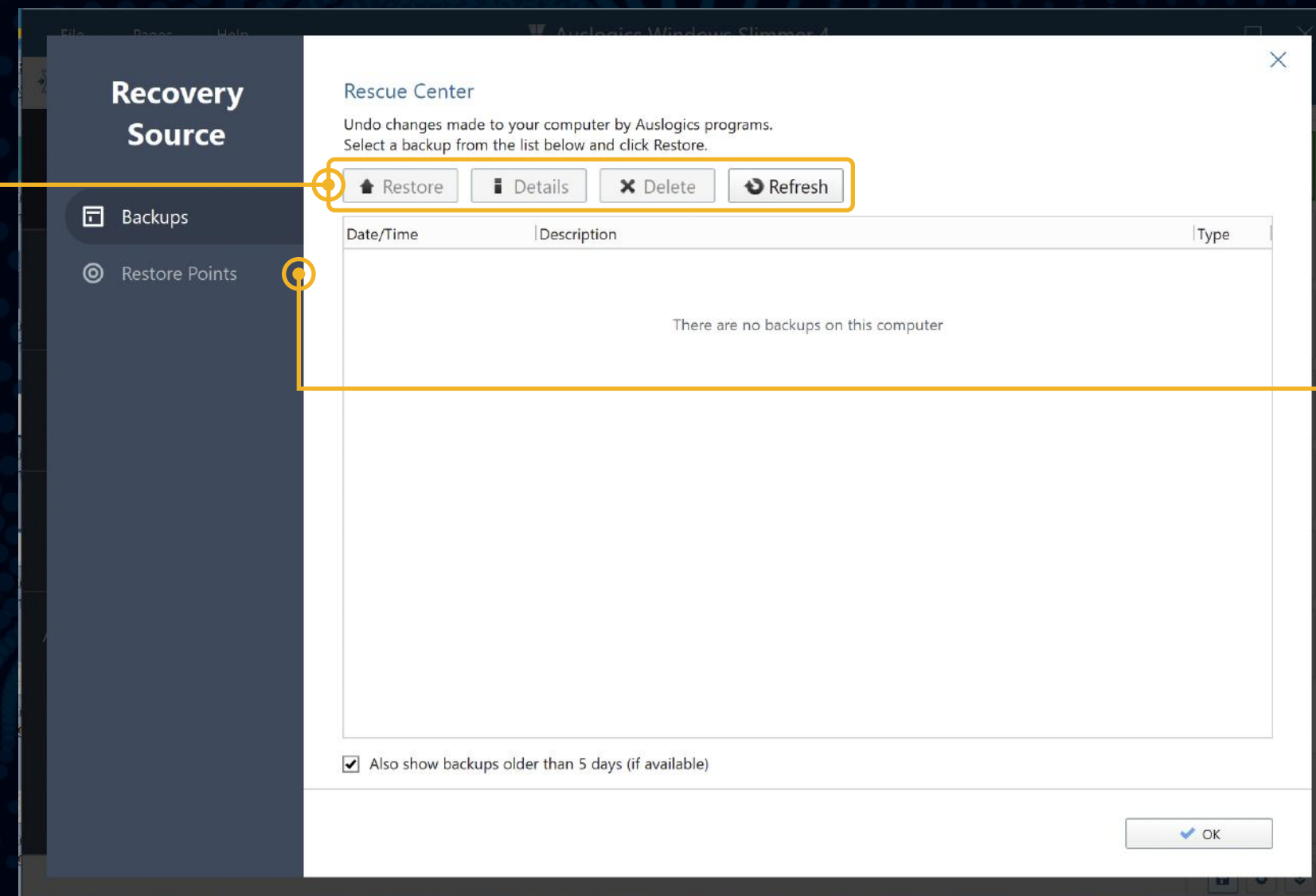
Backing Up with the Rescue Center



To view backups created in the Rescue Center, click on the diskette icon at the bottom-right of the main program window. In the window that opens you will see a list of available backups that have been created by Windows Slimmer.

Select a backup from the list and then choose the action you would like to apply to it by clicking a button above the list, such as **'Restore'**, **'Details'** or **'Delete'**.

Clicking **'Refresh'** will refresh the list of available backups. Click **'OK'** when done.



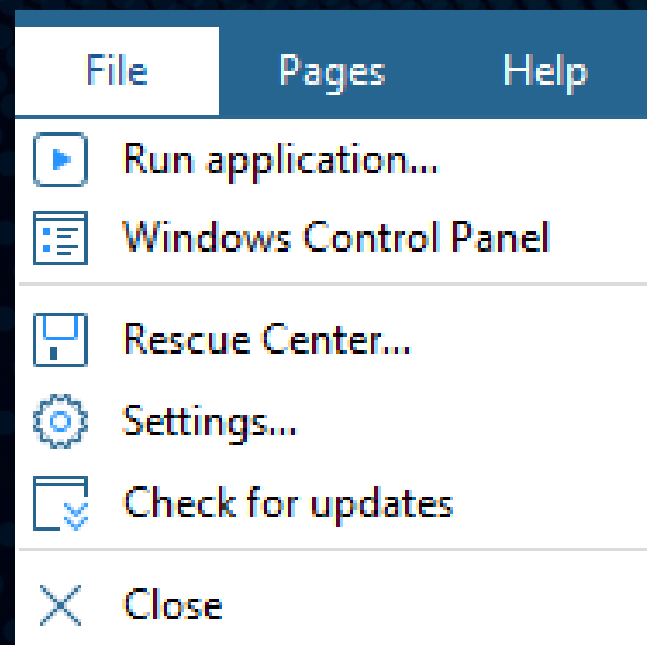
You can also view available system restore points here by selecting **'Restore Points'** from the left-side menu. Use this feature if you need to take your whole system back to a point in time before you applied specific changes or installed certain software, not just Auslogics.

! NOTE

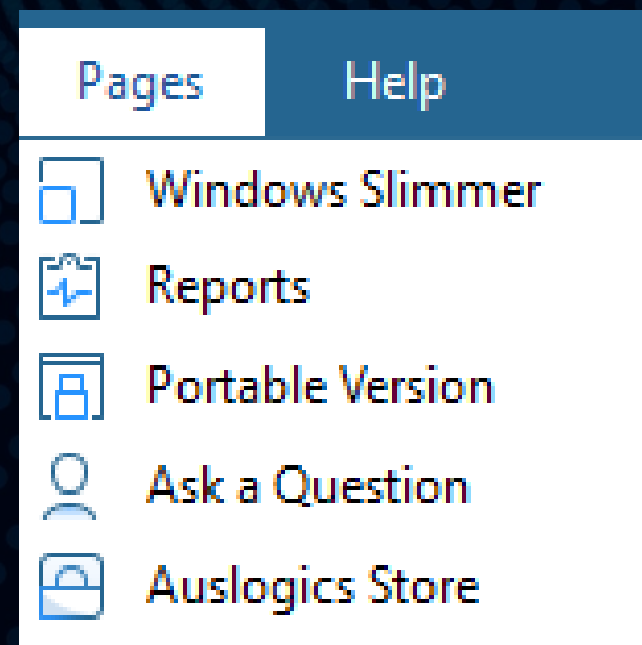
When you use a restore point, you may lose all changes made and all files saved after the date to which you are rolling back.

Main Menu

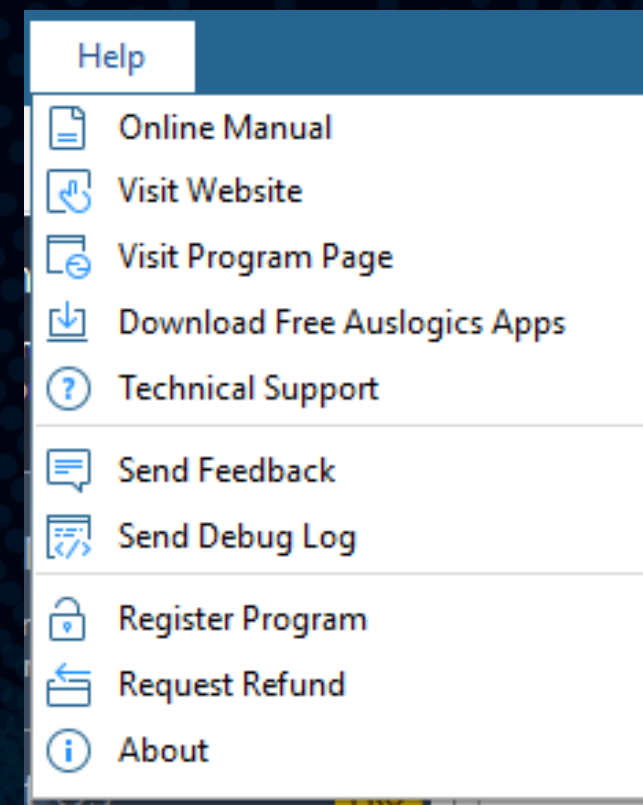
The main program menu is located at the very top of the program window and gives you four drop-down lists of shortcuts to almost every Windows Slimmer feature.



The **File** menu contains the main options that let you quickly run any program or open a website by simply typing its name or address in a popup window; open the Control Panel, open settings or check for updates.



The **Pages** menu lets you quickly switch between tabs.



The **Help** menu lists the options you have for getting information about the program or assistance with it.

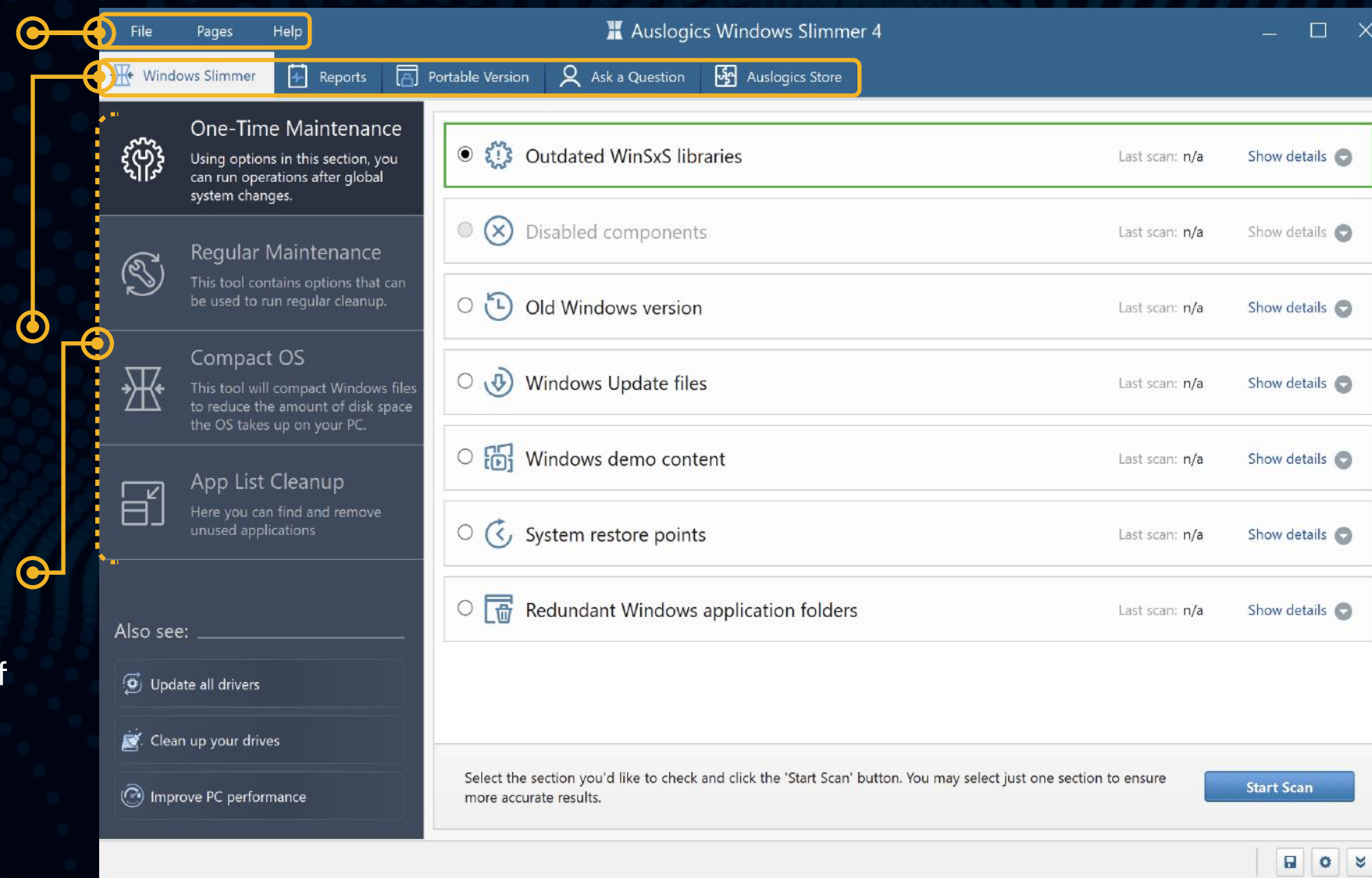
Main Window and Navigation

When you open Windows Slimmer, the main program window opens on the Windows Slimmer tab.

At the very top of the window, you see the **main menu** that lets you navigate through the program, easily access various features or find help info (see Main Menu section above for details).

Right below the main menu you see the **tabs** that let you switch between the program's sections. We'll be looking at each tab in more detail further in this guide.

On the left, you see the **navigation panel** that lets you go through the program's functionality and apply all of its features for maximum optimization effect.



The items you see on the navigation panel are:

One-Time Maintenance: the program's essential functionality is available here. Use it to run cleanup after global changes, like OS reinstalls, updates, upgrades, etc.

Regular Maintenance: lets you monitor your Windows' size and run regular cleanups to maintain the most efficient operation.

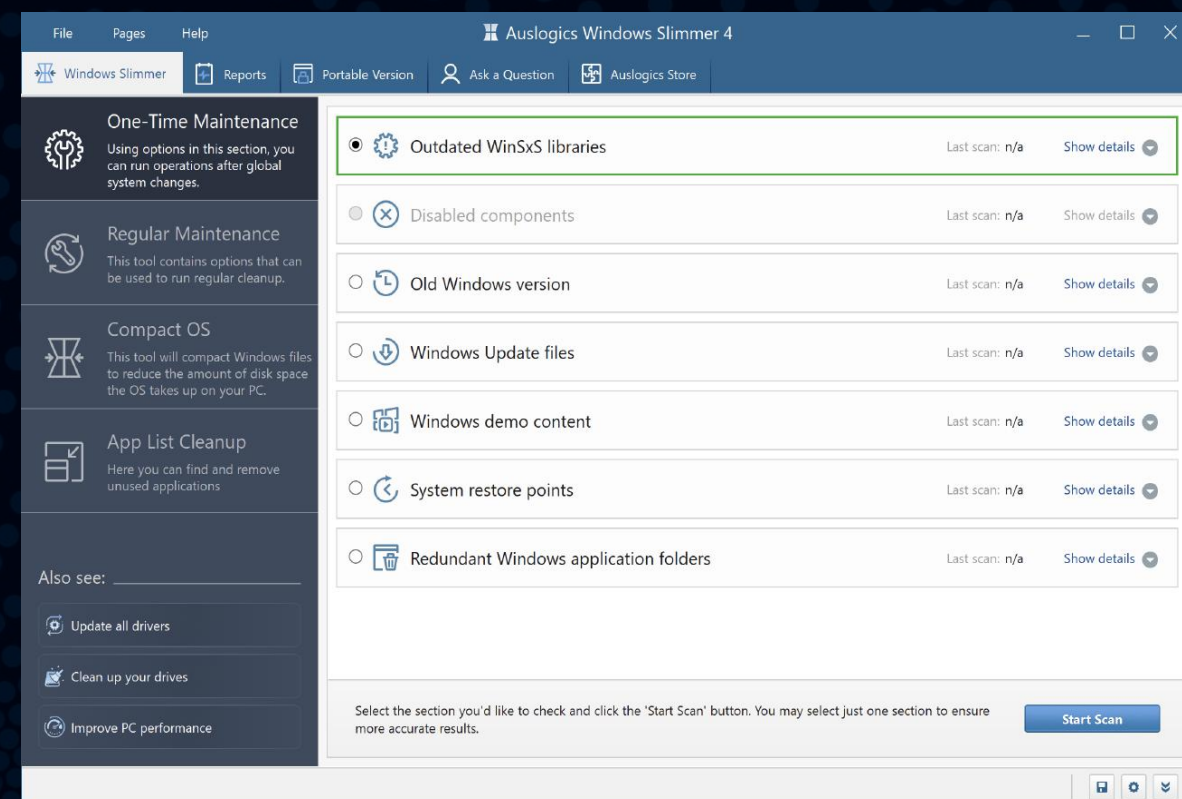
App List Cleanup: lets you sort through the list of installed software and remove any programs that are no longer needed.

Compact OS will compact Windows files to reduce the amount of disk space the OS takes up on your PC.

Using Windows Slimmer **One-Time Maintenance**

Under 'One-Time Maintenance' you can find the essential features to use after a new PC purchase, a Windows reinstall or other global changes.

Here you see a list of categories that can be checked for cleanup potential. We recommend selecting one category at a time for a thorough scan and cleanup. This helps produce the most accurate results and ensure a more effective slimdown. If a category is not available (such as when it has been cleaned out before), it will be greyed out and you will not be able to select it.



The categories that may be available for cleanup include:

Outdated WinSxS libraries: Delete old versions of WinSxS libraries that are no longer used or needed.

Old Windows version: If you don't plan to go back to your previous Windows version, delete the backup, which is normally created when you upgrade your PC to a newer operating system version.

Windows demo content: Clear demo files used by vendors or manufacturers to demonstrate your PC's capabilities or new interesting features.

Disabled components: Remove system components that have been downloaded to your PC, but are disabled and not used.

Windows Update files: Remove unneeded Windows Update files that may remain on your PC after you download and install updates.

System restore points: You can clear all system restore points except for the last one, which can save a significant amount of disk space.

Redundant Windows application folders: Remove leftover files and folders from applications that were once used by applications installed on your computer, but became redundant after they were uninstalled.

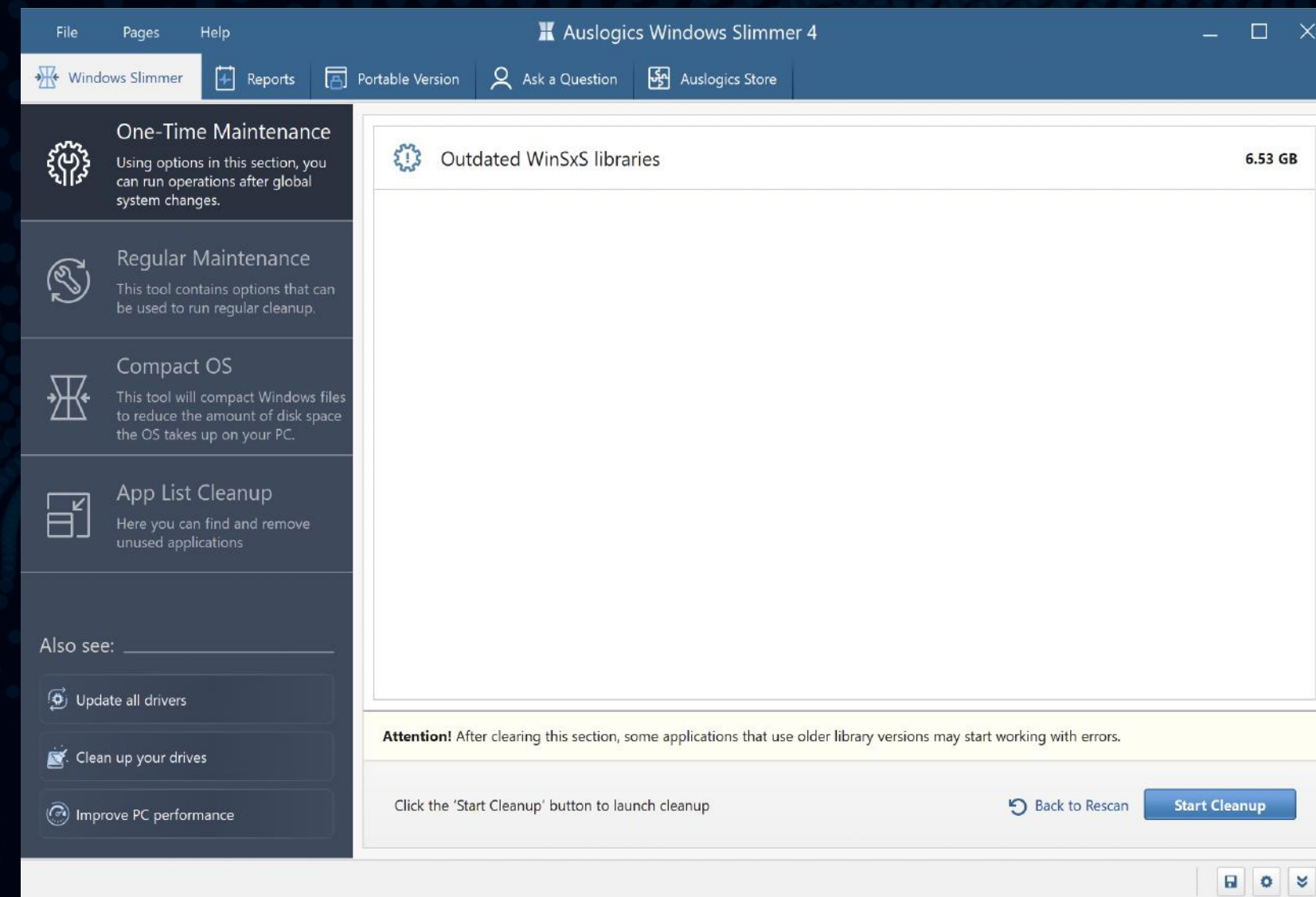
Using Windows Slimmer **One-Time Maintenance**

Under 'One-Time Maintenance' you can find the essential features to use after a new PC purchase, a Windows reinstall or other global changes.

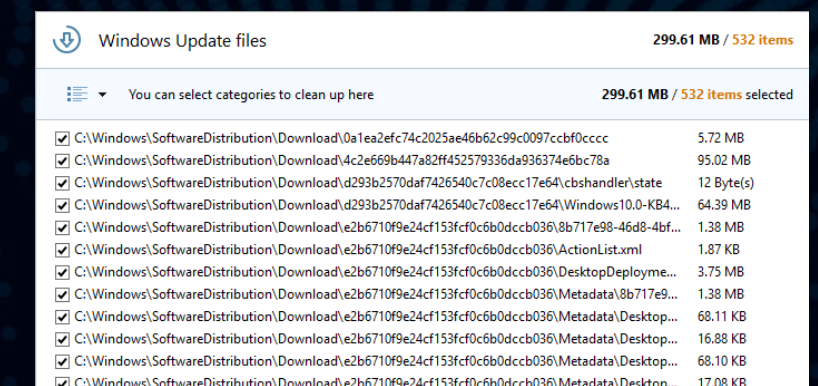
Start Scan

To run a scan, click on a category to select it, then hit the **'Start Scan'** button. When the scan completes, you will see how much space you can clear under the scanned category after a full cleanup.

Be sure to check if there are any warnings below the table, as cleaning some of the categories may potentially cause issues and is recommended for experienced users only. To proceed with the cleanup, just click the **'Start Cleanup'** button.



When the cleanup completes, you will see a brief results summary and will be able to click a link to view more detailed results in an html report.



Using Windows Slimmer **Regular Maintenance**

In addition to the essential cleanup available under 'One-Time Maintenance', go to 'Regular Maintenance' to clean up even more areas in your Windows. You can use this feature on a regular basis to keep your operating system slim and efficient.

On the Regular Maintenance screen, you also see a list of categories available for cleanup, and can select the ones you want to scan and process.

The categories available here include:

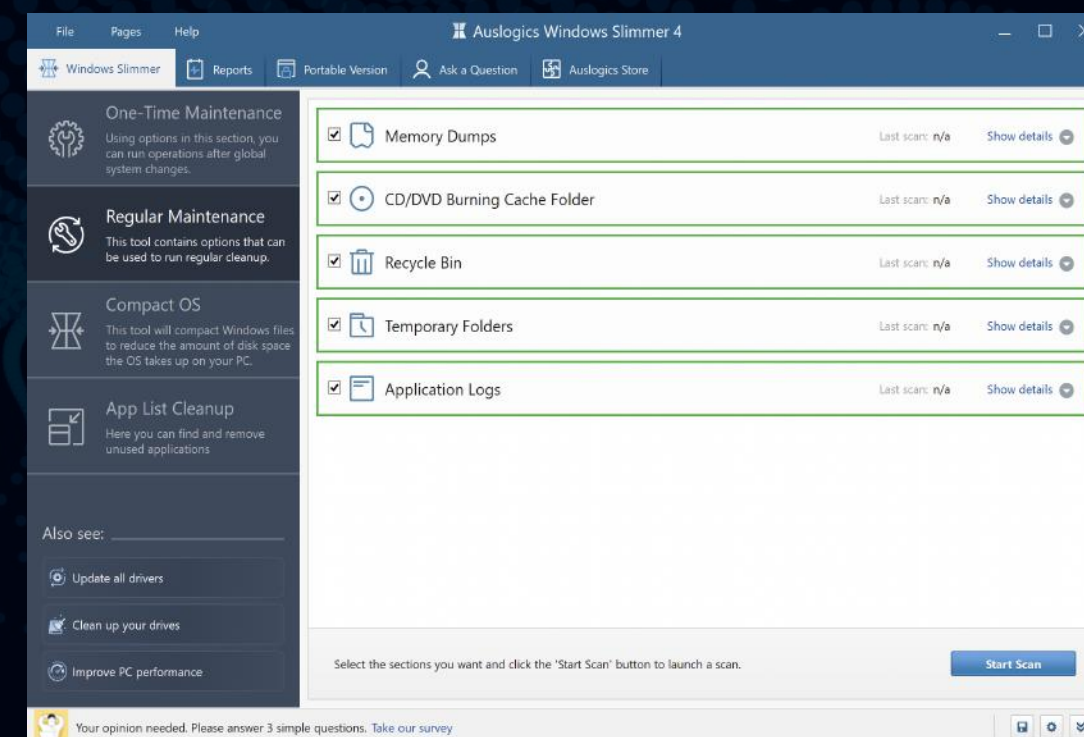
Memory dumps: memory dump files are created by the system and are often not needed beyond a certain point CD/DVD burning cache folder. When you are done burning a CD or DVD, the cache is no longer needed and can be safely removed.

Recycle Bin: clearing the Recycle Bin can often result in gigabytes of space being freed up, as we often tend to forget about the deleted files that stay there.

Temporary folders: files kept in Windows temporary folders are meant to remain on your drives temporarily, but sometimes stay longer than needed.

Application logs: logs created by applications are often not needed and end up wasting your drive space.

Select the categories you want cleaned up and hit the 'Start Scan' button. Here you don't need to worry about scanning one category at a time: all of them can be processed simultaneously. When the scan completes, you will see how much unneeded stuff was found under each category and will be able to remove it all by clicking the 'Start Cleanup' button. After cleanup, there will be a brief results summary and a link to review a full report in html format.

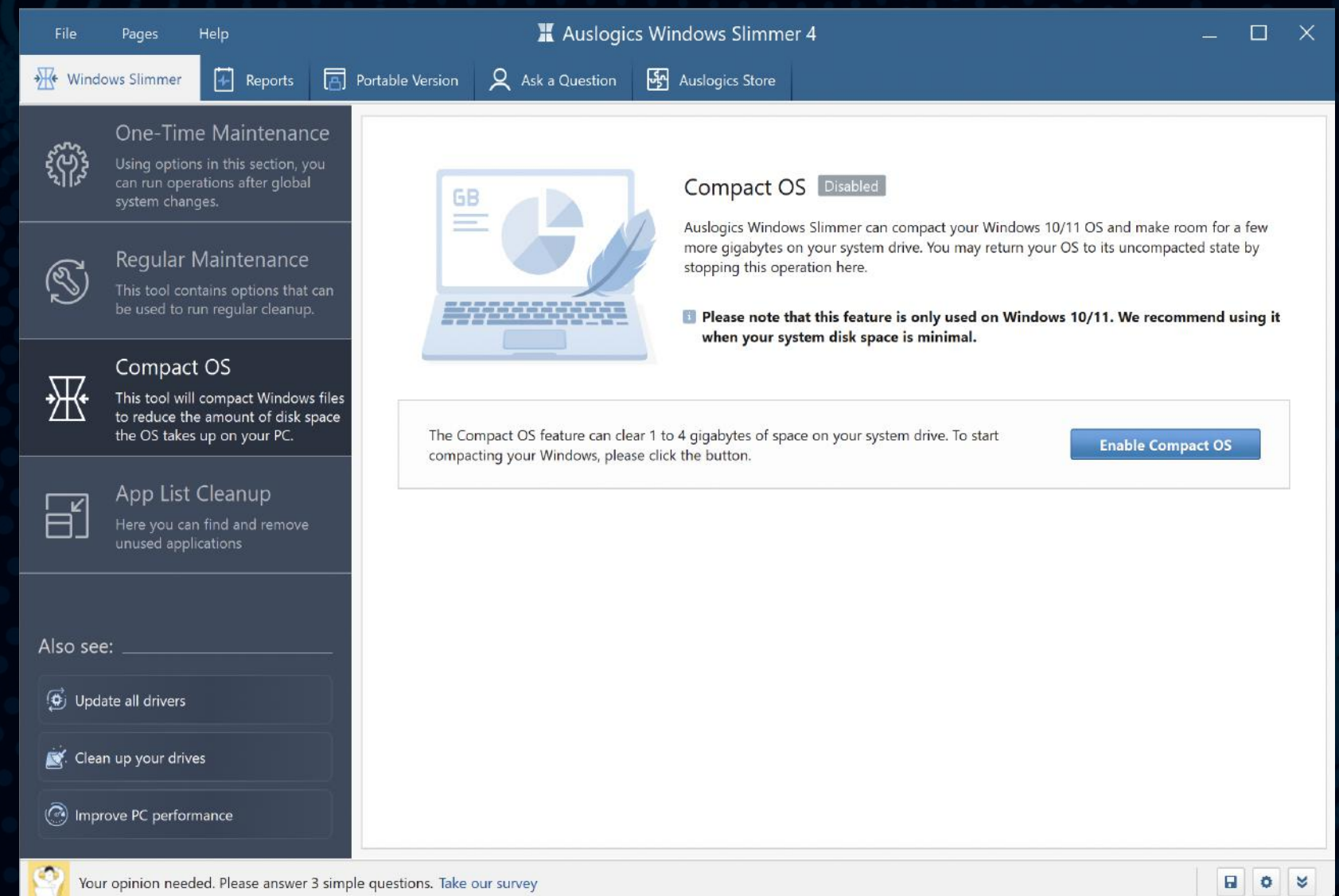


Using Windows Slimmer **Compact OS**

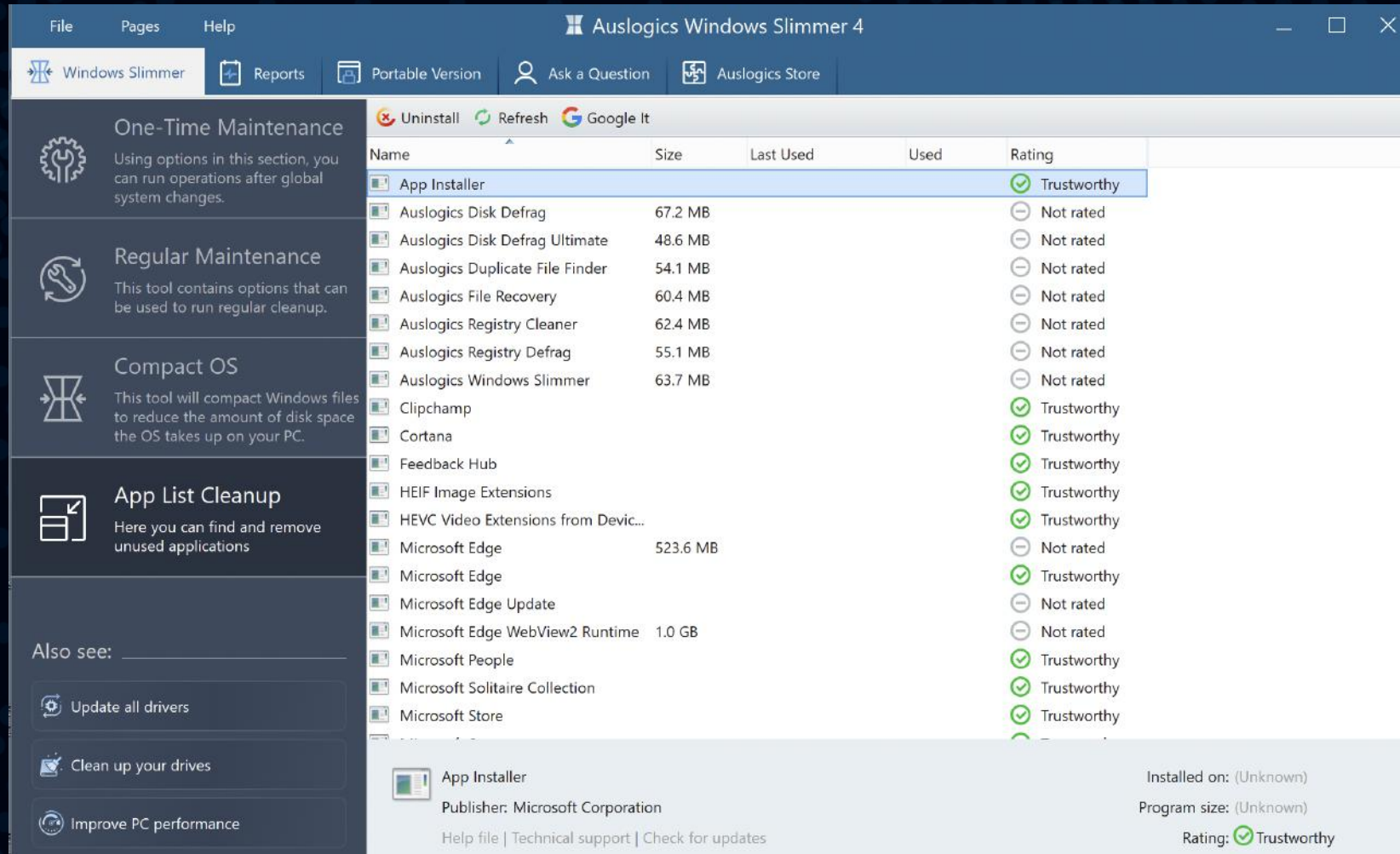
The third feature in Windows Slimmer's left-side menu is the new 'Compact OS' tool. This tool lets you pack up system files to reduce the amount of space they take up on your drive.

The feature is especially useful when your OS is installed on a smaller SSD drive which tends to run out of space.

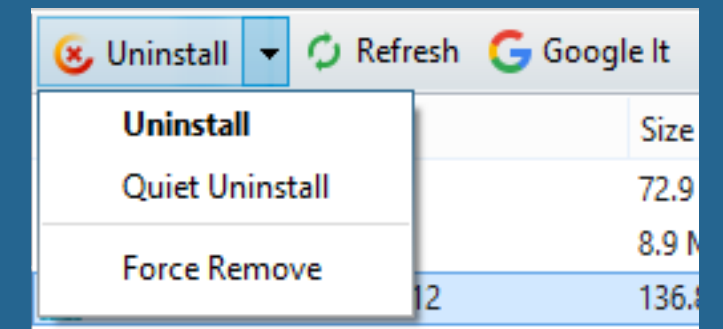
If your system drive has plenty of space available, we recommend having the Compact OS feature disabled to help your system access those files faster.



Using Windows Slimmer **App List Cleanup**



The last option on the left-side navigation panel is **'App List Cleanup'**. It lets you go through the list of all applications installed on your PC and remove any that are no longer needed. This can free up gigabytes of space, as software is usually quite large.



To remove a program, select it from the list and click the **'Uninstall'** button at the top, or click the arrow on the Uninstall button and select removal option.

If you are not sure about a program, select it and click **'Google it'** above the list to run an online search for information about this program.

Besides the regular uninstall procedure, and if these additional options apply to the software you want to remove, you can choose to force-remove an app or to uninstall it quietly. The force remove option is especially useful when an app proves tough to remove using regular means, as it ensures that every trace of the app is deleted from your system. Quiet uninstall works only if such option is provided by the software manufacturer, and it basically lets you remove the app without any pop-ups or dialogs during the uninstall process.

Reports

Using the 'Reports' tab in Windows Slimmer, you can review your current resource consumption and manage operation reports.

On the left side of the screen you can monitor current resource use statistics. This provides a great overview of how your system is handling all the tasks and applications that are currently running on it. If you see extremely high CPU, disk, network or memory loads, you will know that something might be wrong and will be able to take action.

You can also click the **'Create System Report'** button to get a full report on your system's setup. This is especially useful if you need to contact technical support over the phone and may be asked for your PC or hardware details. It also helps when deciding if and how your system's hardware can be upgraded.

File Pages Help Auslogics Windows Slimmer 4

Windows Slimmer Reports Portable Version Ask a Question Auslogics Store

Here you will find current system resource load charts and can view reports on all operations.

CPU (5%) Detailed view 100%

Disks (212 KBps) 50 MBps

Network (102 Bps) 25 KBps

Memory (70%) 100%

Tool Reports
You can view all reports on all operations, or just reports for a specific time period for a selected tool.

All

Name	Tool	Date
Report	Windows Slimmer	7/16/2019

Optimize Drivers Create System Report View Report Delete Reports

Your opinion needed. Please answer 3 simple questions. Take our survey

On the right side you see a table that lists reports created after every operation.

You see the report name, the name of the tool that created it and the date when the operation ran.

The filter above the table lets you search for specific reports by creation time.

Click on a report in the table to select it, then click the **'View report'** button below the table to view it.

Use the **'Delete'** button to delete all reports ever created or just the reports listed above (the ones that match your search filter): you can select the option you want from the drop-down menu that opens when you click on the **'Delete'** button arrow.

Auslogics Store

The 'Auslogics Store' tab lists software programs made by Auslogics or its partners and recommended for your PC.

To install and try a recommended program, click the 'Buy Now' button next to it. This will open a window with a brief summary of what the software can do for your PC, and a link to download and install it.

Once a recommended program has been installed, it will show as installed and will have a 'Run' button and a 'See status' link next to it.

The screenshot shows the 'Auslogics Windows Slimmer 4' application window with the 'Auslogics Store' tab selected. The store features an 'Exclusive offer for registered users only' banner. Below the banner, there is a list of software programs:

Program Name	Description	Price	Discount	Action
FILEWHOPPER	Send big files and folders without compression. Simple, secure, encrypted. Your first 5GB is free.			Try now
BoostSpeed 12	Clean, tweak and turbo-charge your computer today	\$47.96	20% off (\$59.95)	Buy now
Driver Updater	The best solution for keeping your hardware and devices working smoothly.	\$31.96	20% off (\$39.95)	Buy now
Anti-Malware	Top-notch protection against malware and data safety threats.	\$23.96	20% off (\$29.95)	Buy now
Disk Defrag Ultimate	Auslogics Disk Defrag Ultimate is the perfect tool to get your drives working at ...	\$23.96	20% off (\$29.95)	Buy now
Disk Defrag	Choice of millions of users worldwide!	\$23.96	20% off (\$29.95)	Buy now
Registry Cleaner	Safe and easy way to restore stability	\$23.96	20% off (\$29.95)	Buy now
Video Grabber	Download, convert and save any video from the web	\$31.96	20% off (\$39.95)	Buy now
Windows Slimmer	A quick way to make your Windows smaller	\$23.96	20% off (\$29.95)	Buy now

NOTE

These programs may offer a trial or a free version, but require a license to be purchased for full functionality. Installing or using any of them is completely optional.

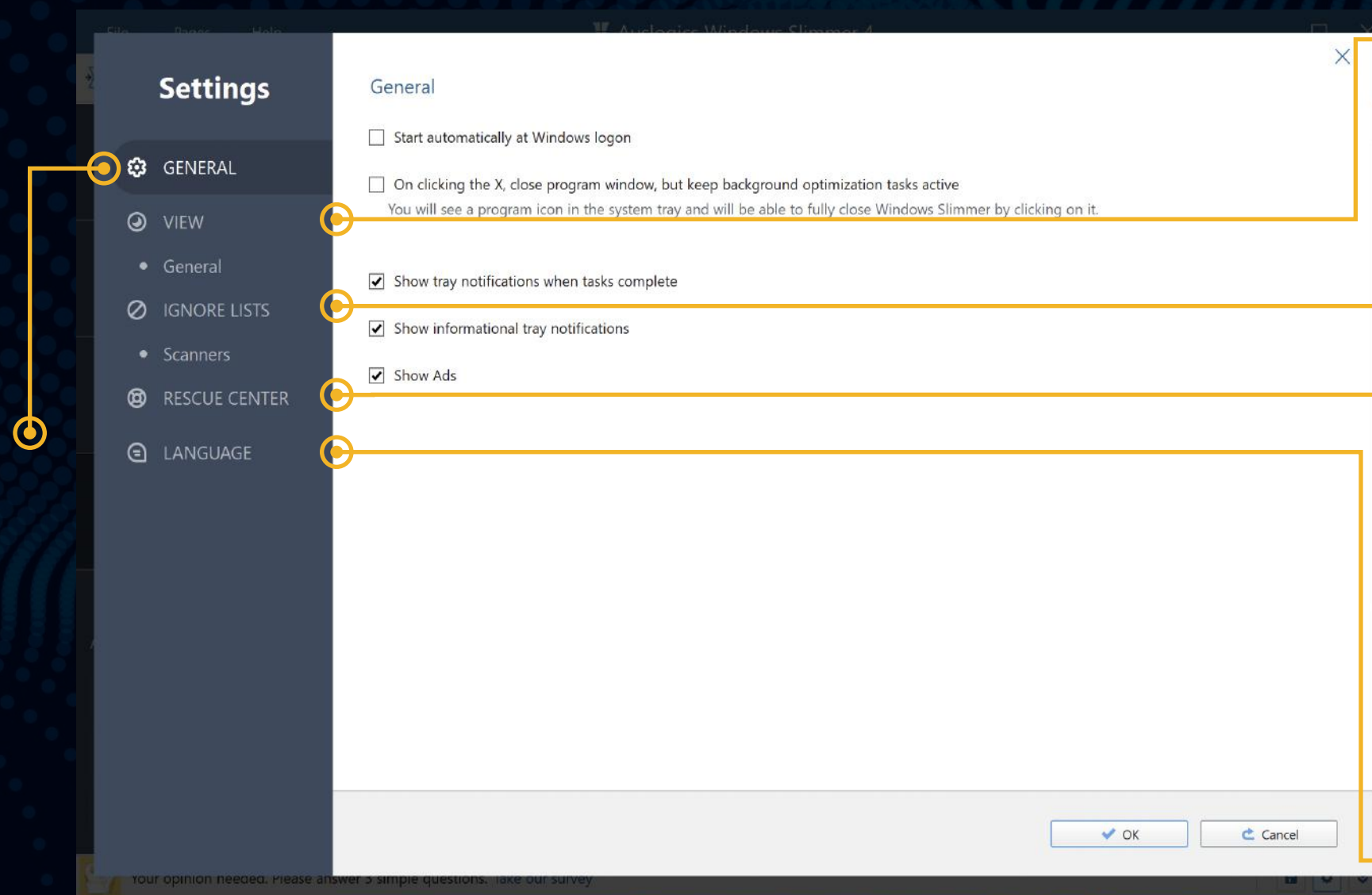
Customizing Program Settings

The Settings manager allows you to change the program's appearance and behavior.



To access Windows Slimmer settings, click on the gear icon at the bottom-right of the main program window. A new window will appear, with its own navigation pane on the left. Click through the options on the navigation pane and adjust the settings to satisfy your needs.

Under **General**, you can specify the program's behavior (whether you want it to start at Windows logon, or be minimized on close, etc.).



Under **View**, select the size of interface elements.

Under **Ignore lists**, you can see files and folders that will be skipped over during scans. To add files here, you can right-click on your selection in the results section after a scan. In the drop-down menu, simply select "Move Selected to the Ignore List". You can also enter them manually into the list. The same applies for keys in the Registry ignore list.

Under **Rescue Center**, adjust backup settings (see 'Backing up with the Rescue Center' earlier in this guide).

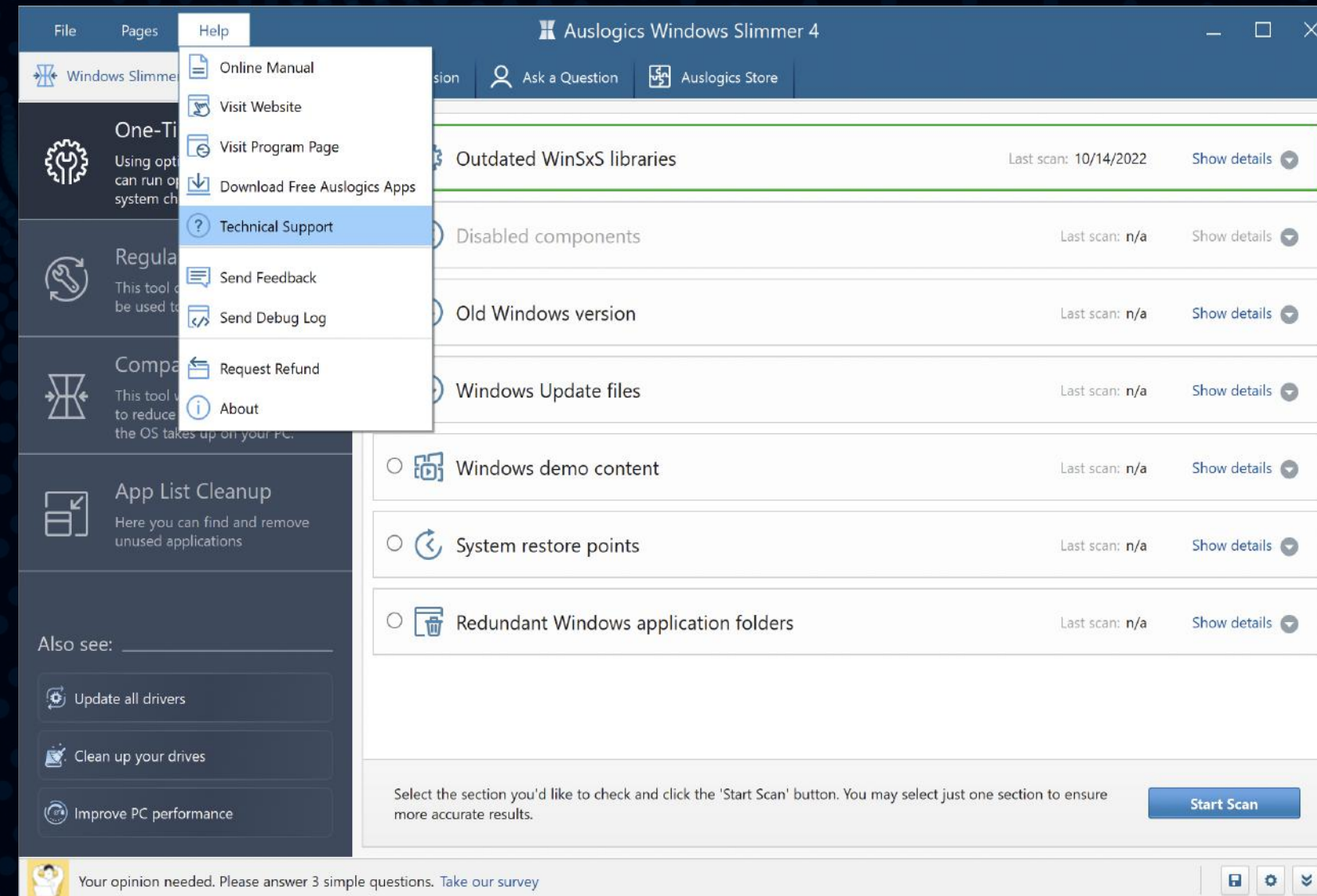
Under **Language**, you can choose the interface language for Windows Slimmer.

When done, click '**OK**' to exit and apply all changes.

Contacting Auslogics

There are a number of ways to contact Auslogics, including several you can reach right from Disk Defrag's Help menu.

Click on **'Help'** in the main menu, then select **'Technical Support'** to go to the contact form on auslogics.com and send us a message. If you experience technical issues with the program, you can click on **'Send debug log'** to help our team get to the root of the problem.



Many of the questions you may have regarding Auslogics products have already been answered in the FAQ section on www.auslogics.com.

The Support section on the Auslogics website also offers a way to retrieve a lost license key, request a refund, download product manuals and more.

Should you have any questions that are not answered on the website, don't hesitate to email our dedicated customer support team 24/7 at the following address: support@auslogics.com.

**Thank You
for Using Auslogics Software!**

auslogics
software